



INDEX	PAGE(S)
CNC Tool Storage Solutions	252 - 253
Preconfigured Models . . .	254 - 256
Components	257 - 265

CNC TOOL STORAGE SOLUTIONS

With the flexibility of our CNC line, your tools are always protected during regular handling, transportation and storage. Rousseau's CNC tool rack is unique in many ways, it is:

- **Modular:** It is compatible with the entire Rousseau product range
- **Adaptable:** Available blank or with perforations, it can be adapted to any type of tool
- **Sturdy:** Maximum support and stability prevents tools from falling, even when the rack is tilted
- **Ergonomic:** Practical, ergonomic handles make it easy to carry. The 20° angled adapters facilitate handling of parts in Spider® Shelving and on WM uprights
- **Secure:** With its resistant PVC extruded design, it can withstand blows and corrosion, and allows fluids to drain away, which prolongs the life of your tools

The racks also feature a tool identification zone for quick and easy tool retrieval.





THE ROUSSEAU DIFFERENCE



Made of resistant PVC, the extruded part of the rack protects tools against impacts. Contact points between tools and the rack are minimized to help prevent corrosion.



The tool rack has perforations for Taper, Straight, Sandvik Capto, HSK, KM and VDI tools. A blank version with perforations is also available.



The core component of the system – the tool rack – is compatible with the entire Rousseau product line. It is compact and sturdy and includes practical, ergonomic handles to facilitate tool transportation.



With its original two-level design, the rack offers improved support and increased stability, preventing tools from falling out even in a tilted position.

CNC TOOL RACK INTEGRATION WITH ROUSSEAU PRODUCTS



IMPORTANT

CNC tool storage products include NC10 blank tool racks by default. To order models with NC12 perforated racks, contact Customer Service or consult the Price Tool on e-Rousseau

87"H SHELVING WITH MODULAR DRAWERS

NCS2392



NCS2392

PRODUCT NO.	W × D × H	NO. OF RACKS
NCS2392	30" × 24" × 87"	8

- 1 drawer, 3"H with groove trays
- 1 drawer, 4"H with foam for collets
- 1 drawer, 4"H with compartments
- 2 drawers, 7"H with adapters
- 5 shelves
- 1 set of 48"H mounting brackets
- 4 shelf dividers
- 2 welded closed uprights
- 1 front base
- 4 floor anchor plates
- 1 floor anchoring hardware kit
- 2 back panels
- 8 blank NC tool racks



Shelving with drawers must be anchored to the floor (anchor kit included).

75"H SHELVING WITH ADAPTERS

NCS4195



NCS4195

PRODUCT NO.	W × D × H	NO. OF RACKS
NCS4195	36" × 18" × 75"	9

- 3 shelves
- 3 pairs of tool rack adapters
- 2 shelf dividers
- 2 welded closed uprights
- 1 front base
- 4 floor anchor plates
- 1 floor anchoring hardware kit
- 2 back panels
- 9 blank NC tool racks

MINI-RACKING

NCS6194



NCS6194

PRODUCT NO.	W × D × H
NCS6194	60" × 24" × 87"

- 5 pairs of heavy-duty beams
- 2 welded Mini-Racking uprights
- 5 heavy-duty tie bars
- 2 steel decking levels
- 3 blank PVC decking levels

NOTES: Load capacity per steel decking level: 1,925lb.
Load capacity per PVC decking level: 1,000lb.

IMPORTANT

This CNC tool storage product includes NC33 blank tool decking by default. To order a model with NC34 perforated decking, contact Customer Service or consult the Price Tool on e-Rousseau.

IMPORTANT

CNC tool storage products include NC10 blank tool racks by default. To order models with NC12 perforated racks, contact Customer Service or consult the Price Tool on e-Rousseau

MOBILE CABINET

NCM8195



NCM8195

PRODUCT NO.	W×D×H	NO. OF RACKS
NCM8195	36"×24"×61½"	2

- 1 cabinet with standard lock
- 1 laminated hardwood top
- 1 pair of 6" rigid casters
- 1 pair of 6" swivel casters with total-lock brake
- 1 side handle
- 5 drawers with integrated lock-in mechanism
 - 2 drawers, 4"H
 - 3 drawers, 6"H
- 1 single WM frame
- 1 foldaway shelf
- 2 standard WM tool rack adapters
- 2 blank NC tool racks

NOTE: Drawer compartments are not included and must be ordered separately, [see page 217](#).

MODULAR CABINET WITH DRAWERS

NCM0097



NCM0097

PRODUCT NO.	W×D×H	NO. OF RACKS
NCM0097	36"×24"×60"	12

- 1 cabinet with One-Drawer-at-a-Time system
- 1 forklift base, 2"H
- 3 drawers, 7"H with adapters
- 12 blank NC tool racks

WORKSTATION WITH WM BENCH FRAME

NCW0598



NCW0598

PRODUCT NO.	W×D×H	NO. OF RACKS
NCW0598	60"×30"×80"	3

- 1 double WM bench frame
- 2 tiltable shelves
- 3 partial dividers
- 1 power outlet module
- 1 document holder with arm
- 1 utility panel
- 1 panel bracket kit
- 1 pack of 10 double back single hooks
- 1 overhead LED workstation light
- 1 WM tool holder
- 2 WM tool rack adapters:
 - 1 single
 - 1 double
- 1 pair of cantilever overhead supports
- 1 laminated hardwood top
- 1 closed leg, 27"D×32"H
- 1 side panel
- 1 L cabinet, 5 drawers with compartments
 - 2 drawers, 3"H
 - 3 drawers, 6"H
- 3 blank NC tool racks

IMPORTANT

CNC tool storage products include NC10 blank tool racks by default. To order models with NC12 perforated racks, contact Customer Service or consult the Price Tool on e-Rousseau

STATIONARY WM STAND

NCW0259



NCW0259

PRODUCT NO.	W×D×H	NO. OF RACKS
NCW0259	32" x 27" x 54"	8

- 1 WM stand with leveling glides kit
- 4 double WM tool rack adapters
- 2 plastic bin rails
- 2 tiltable shelves
- 6 partial dividers
- 8 blank NC tool racks

NOTE: Red plastic bins are not available from Rousseau.

MOBILE CART

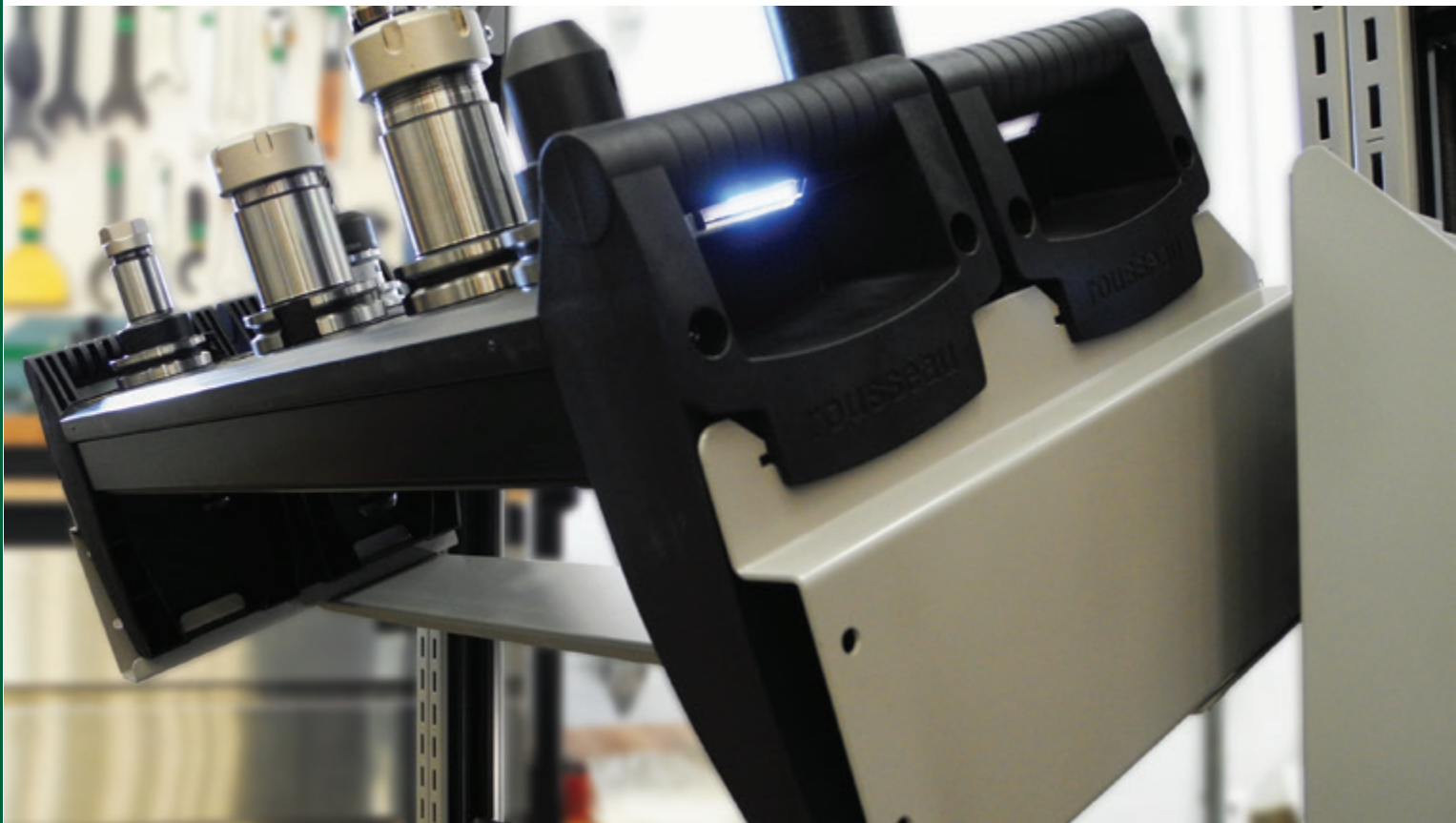
NCW0109



NCW0109

PRODUCT NO.	W×D×H	NO. OF RACKS
NCW0109	32" x 27" x 41 1/4"	8

- 1 mobile cart with 4" casters
- 1 shelf with handle
- 4 double WM tool rack adapters
- 8 blank NC tool racks



TOOL RACKS

TOOL RACK FOR WM, DRAWERS AND SHELVING

NC10/ NC12



NC12



NC10

- Perforated or blank rack available
- Made of resistant PVC, the extruded part of the rack protects tools against impacts, corrosion and metal shards
- Widths available: 30" and 36"
- Includes an identification zone for quick and easy tool retrieval
- Compatible with 28"W and 34"W WM11 frames (or two WM10 uprights and a WM15 crossmember) and WMA units with NC50 adapters
- Compatible with WM35 wall-mounted frames with NC50 adapters
- Compatible with RF31/ RF32/ RF33/ RF34/ RF35/ RF36 drawers (with NC54 adapters) in the following sizes: 30"W × 21"D, 36"W × 18"D, 30"W × 24"D, 36"W × 24"D, 30"W × 27"D
- Compatible with Spider® shelving (with NC51 adapters) in the following sizes: 30"W × 24"D, 36"W × 18"D, 36"W × 24"D
- Color: black

SHELVING - WM UPRIGHTS AND FRAMES - CABINETS

CNC tool storage products (see pages 254-256) include NC10 blank tool racks by default. To order models with NC12 perforated racks, contact Customer Service or consult the Price Tool on e-Rousseau.

The following table specifies the product number corresponding to your tool type.

TOOL RACK C/C DIMENSIONS	30"W TOOL RACK 28" C/C		36"W TOOL RACK 34" C/C	
	25 1/4"W × 5"D × 7 7/8"H		31 1/4"W × 5"D × 7 7/8"H	
	ACTUAL DIMENSIONS			
TOOL TYPE	PRODUCT NO.	NO. OF HOLES	PRODUCT NO.	NO. OF HOLES
Blank rack	NC10-3000	—	NC10-3600	—
Taper 30	NC12-3001	10	NC12-3601	12
Taper 40	NC12-3003	7	NC12-3603	9
Taper 45	NC12-3004	6	NC12-3604	7
Taper 50	NC12-3005	5	NC12-3605	6
3/4" Straight	NC12-3010	20	NC12-3610	26
1" Straight	NC12-3011	20	NC12-3611	26
1 1/4" Straight	NC12-3013	20	NC12-3613	26
1 1/2" Straight	NC12-3015	8	NC12-3615	10
1 3/4" Straight	NC12-3016	8	NC12-3616	10
2" Straight	NC12-3018	6	NC12-3618	7
2 1/4" Straight	NC12-3019	6	NC12-3619	7
2 1/2" Straight	NC12-3021	6	NC12-3621	7
C3 Sandvik Capto	NC12-3030	22	NC12-3630	26
C4 Sandvik Capto	NC12-3031	22	NC12-3631	26
C5 Sandvik Capto	NC12-3032	10	NC12-3632	12
C6 Sandvik Capto	NC12-3033	7	NC12-3633	9
C8 Sandvik Capto	NC12-3034	6	NC12-3634	7
HSK 25 (A-C-E)	NC12-3040	22	NC12-3640	26
HSK 32 (A-C-E)	NC12-3041	22	NC12-3641	26
HSK 40 (A-C-E)	NC12-3042	22	NC12-3642	26
HSK 50 (A-C-E)	NC12-3043	10	NC12-3643	12
HSK 63 (A-C-E)	NC12-3044	7	NC12-3644	9
HSK 80 (A-C-E)	NC12-3045	5	NC12-3645	6
HSK 100 (A-C-E)	NC12-3046	4	NC12-3646	5
32 KM	NC12-3050	22	NC12-3650	26
40 KM	NC12-3051	22	NC12-3651	26
50 KM	NC12-3052	10	NC12-3652	12
63 KM	NC12-3053	7	NC12-3653	9
80 KM	NC12-3054	5	NC12-3654	6
VDI 30 mm	NC12-3060	6	NC12-3660	7
VDI 40 mm	NC12-3061	5	NC12-3661	6
VDI 50 mm	NC12-3062	4	NC12-3662	5

NOTE: The number of tools that a tool rack can hold varies according to tool diameter and the length of extruded surfaces. The number of holes specified in the table indicates the number of perforations per extruded surface.

TOOL RACK FOR TEKZONE HUTCH

NC14 / NC15



NC15



NC14

- Perforated or blank rack available
- Made of resistant PVC, the extruded part of the rack protects tools against impacts, corrosion and metal shards
- Widths available: 23" and 29"
- Includes an identification zone for quick and easy tool retrieval
- Attaches to TekZone Hutch rear utility panels at the desired height
- Color: black

TEKZONE HUTCH

The following table specifies the product number corresponding to your tool type.

TOOL RACK	23"W TOOL RACK		29"W TOOL RACK	
ACTUAL DIMENSIONS	23"W×5"D×4"H		29"W×5"D×4"H	
TOOL TYPE	PRODUCT NO.	NO. OF HOLES	PRODUCT NO.	NO. OF HOLES
Blank rack	NC14-2300	—	NC14-2900	—
Taper 30	NC15-2301	10	NC15-2901	12
Taper 40	NC15-2303	7	NC15-2903	9
Taper 45	NC15-2304	6	NC15-2904	7
Taper 50	NC15-2305	5	NC15-2905	6
¾" Straight	NC15-2310	20	NC15-2910	26
1" Straight	NC15-2311	20	NC15-2911	26
1¼" Straight	NC15-2313	20	NC15-2913	26
1½" Straight	NC15-2315	8	NC15-2915	10
1¾" Straight	NC15-2316	8	NC15-2916	10
2" Straight	NC15-2318	6	NC15-2918	7
2¼" Straight	NC15-2319	6	NC15-2919	7
2½" Straight	NC15-2321	6	NC15-2921	7
C3 Sandvik Capto	NC15-2330	22	NC15-2930	26
C4 Sandvik Capto	NC15-2331	22	NC15-2931	26
C5 Sandvik Capto	NC15-2332	10	NC15-2932	12
C6 Sandvik Capto	NC15-2333	7	NC15-2933	9
C8 Sandvik Capto	NC15-2334	6	NC15-2934	7
HSK 25 (A-C-E)	NC15-2340	22	NC15-2940	26
HSK 32 (A-C-E)	NC15-2341	22	NC15-2941	26
HSK 40 (A-C-E)	NC15-2342	22	NC15-2942	26
HSK 50 (A-C-E)	NC15-2343	10	NC15-2943	12
HSK 63 (A-C-E)	NC15-2344	7	NC15-2944	9
HSK 80 (A-C-E)	NC15-2345	5	NC15-2945	6
HSK 100 (A-C-E)	NC15-2346	4	NC15-2946	5
32 KM	NC15-2350	22	NC15-2950	26
40 KM	NC15-2351	22	NC15-2951	26
50 KM	NC15-2352	10	NC15-2952	12
63 KM	NC15-2353	7	NC15-2953	9
80 KM	NC15-2354	5	NC15-2954	6
VDI 30 mm	NC15-2360	6	NC15-2960	7
VDI 40 mm	NC15-2361	5	NC15-2961	6
VDI 50 mm	NC15-2362	4	NC15-2962	5

NOTE: The number of tools that a tool rack can hold varies according to tool diameter and the length of extruded surfaces. The number of holes specified in the table indicates the number of perforations per extruded surface.

TOOL RACK ADAPTERS

WM ADAPTER

NC50



- Adapters for installing NC10 and NC12 tool racks in WM11 frames with uprights spaced 28" and 34" apart c/c (or two WM10 uprights and one WM15 crossmember) or in WMA stands, [see pages 151 and 197](#);
- For installing NC10 and NC12 tool racks in WM35 wall-mounted multi-purpose frames, [see page 199](#);
- Side security notches in the WM adapter ensure tool rack stability
- Angled forward 20° for easy access to tools
- Single and double models in two widths available for one or two racks respectively, 30" (for 28" c/c widths) and 36" (for 34" c/c widths)
- Easy assembly, no tools required

PRODUCT NO.	TYPE	WIDTH
NC50-2801	Single	28" c/c
NC50-2802	Double	28" c/c
NC50-3401	Single	34" c/c
NC50-3402	Double	34" c/c



TOOL RACK SHELVING ADAPTERS

NC51

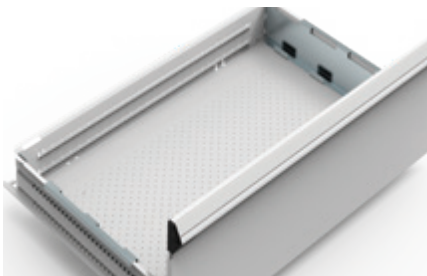


- Sold in pairs
- Adapters for installing NC10 and NC12 tool racks in 30"W x 24"D, 36"W x 18"D and 36"W x 24"D Spider® Shelving, [see page 262](#);
- Angled forward 20° for easy access to tools
- Supports three or four NC10 or NC12 tool racks
- Compatible with Spider® shelving only
- Galvanized steel
- Easy assembly, no tools required

PRODUCT NO.	DEPTH	NO. OF RACKS
NC51-1801	18"	3
NC51-2401	24"	4

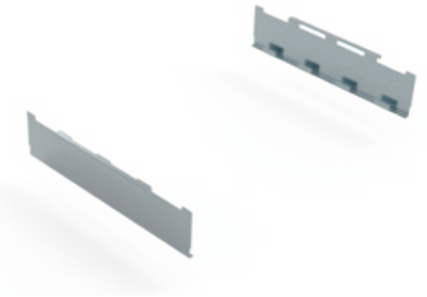
TOOL RACK DRAWER ADAPTERS

NC54



- Sold in pairs
- Adapters for installing NC10 and NC12 tool racks in 7"H heavy-duty drawers (RF31 / RF32 / RF35 / RF36) or in 10"H, 12"H or 14"H drawers for CNC tools (RF33 / RF34), [see pages 207-208 and 261](#)
- Compatible with modular drawers of the following sizes: 30"W x 21"D, 30"W x 24"D, 30"W x 27"D, 36"W x 18"D and 36"W x 24"D
- The adapters prevent the tool racks from tipping when door is opened or closed
- Supports three or four NC10 or NC12 tool racks
- Galvanized steel
- Easy assembly, no tools required

PRODUCT NO.	DEPTH	NO. OF RACKS
NC54-1801	18"	3
NC54-2101	21"	3
NC54-2401	24"	4
NC54-2701	27"	4



NCS8095

DRAWERS AND DRAWER ACCESSORIES

HEAVY-DUTY DRAWER FOR CNC TOOLS RF33 / RF34

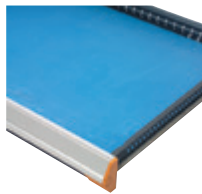


- Heavy-duty drawer for cabinets: RF33
- Heavy-duty drawer for shelving: RF34
- Closed front and open sides for easy insertion and removal of NC10 and NC12 tool racks
- Heights available: 10", 12" and 14"
- To order: Add the drawer height required to the product number, e.g., RF33-302714.

PRODUCT NO.	W x D	APPLICATION
RF33-3021__	30" x 21"	cabinet
RF33-3027__	30" x 27"	cabinet
RF33-3618__	36" x 18"	cabinet
RF33-3624__	36" x 24"	cabinet
RF34-3024__	30" x 24"	shelving*
RF34-3618__	36" x 18"	shelving*
RF34-3624__	36" x 24"	shelving*

NOTES: *Mounting brackets are required to install drawers in shelving, [see page 123](#).
Adapters must be ordered separately, [see page 260](#).

PROTECTIVE FOAM RG41

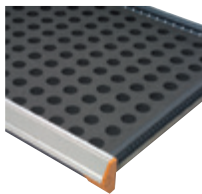


- Protects items stored in the drawer
- One piece of ¼"-thick blue foam

PRODUCT NO.	FOR DRAWER
RG41-3021-01	30"W x 21"D
RG41-3024-01	30"W x 24"D
RG41-3027-01	30"W x 27"D
RG41-3618-01	36"W x 18"D
RG41-3624-01	36"W x 24"D

NOTE: Partitions and dividers cannot be installed in the same drawer as this foam.

COLLET FOAM RG43



- Oil resistant and non-absorbent
- One piece of 1"-thick black foam
- Sold without cut-outs. Can be cut with a hole punch

PRODUCT NO.	FOR DRAWER
RG43-3021-01	30"W x 21"D
RG43-3024-01	30"W x 24"D
RG43-3027-01	30"W x 27"D
RG43-3618-01	36"W x 18"D
RG43-3624-01	36"W x 24"D



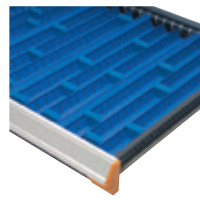
Sold without cut-outs.

PLASTIC BIN



- For easier storing, moving and managing of small parts Lightweight and durable
- For 3"H and 4"H drawers
- 45° angled rim for easy identification of bin contents and removal of bins
- Compatible with the following accessories: partitions, dividers and groove trays
- 6" plastic bins can be subdivided

GROOVE TRAY RG35



- For storing and protecting long objects such as drill bits, borers, sockets, lathe parts, files, tools, etc.
- Blue color for easy identification of stored items
- For 3"H and 4"H drawers
- Compatible with the following accessories: partitions, dividers and plastic bins
- Nominal depths available: 18", 21", 24" and 27"
- To order: Add the drawer depth required to the product number, e.g., RG35-062425.

PRODUCT NO.	DIVIDER NO.
RG35-04__10	RG39-10
RG35-06__10	
RG35-04__15	RG39-15
RG35-06__15	
RG35-06__25	RG39-25

TOOL FOAM RG42



- Oil resistant and non-absorbent
- One piece of ¼"-thick blue foam
- One piece of ½"-thick self-adhesive black foam
- Sold without cut-outs. Can be cut with a utility knife

PRODUCT NO.	FOR DRAWER
RG42-3021-01	30"W x 21"D
RG42-3024-01	30"W x 24"D
RG42-3027-01	30"W x 27"D
RG42-3618-01	36"W x 18"D
RG42-3624-01	36"W x 24"D



RG20

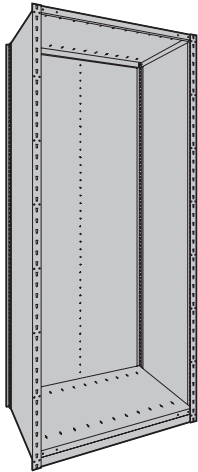
DIMENSIONS			PRODUCT NO.		
W	D	H	BIN	PARTITION	DIVIDER
3"	3"	2"	RG20-030302	-	-
4"	3"	2"	RG20-040302	-	-
6"	3"	2"	RG20-060302	RG22-0302	-
6"	6"	2"	RG20-060602	RG22-0602	RG24-0602
3"	3"	3"	RG20-030303	-	-
4"	3"	3"	RG20-040303	-	-
6"	3"	3"	RG20-060303	RG22-0303	-
6"	6"	3"	RG20-060603	RG22-0603	RG24-0603

NOTE: 2"H bins = 1½" actual height
3"H bins = 2½" actual height

COMPONENTS

SPIDER® SHELVING COMPONENTS

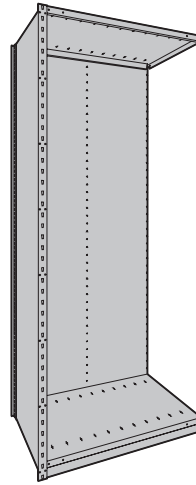
STARTER UNIT



- 2 welded closed uprights
- 2 BOX shelves
- 2 back panels
- 1 front base

PRODUCT NO.	W x D x H
NCS0051	30" x 24" x 75"
NCS0052	30" x 24" x 87"
NCS0053	36" x 18" x 75"
NCS0054	36" x 18" x 87"
NCS0055	36" x 24" x 75"
NCS0056	36" x 24" x 87"

ADD-ON UNIT

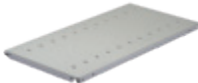


- 1 welded closed upright
- 2 BOX shelves
- 2 back panels
- 1 front base

PRODUCT NO.	W x D x H
NCS0062	30" x 24" x 75"
NCS0063	30" x 24" x 87"
NCS0064	36" x 18" x 75"
NCS0065	36" x 18" x 87"
NCS0066	36" x 24" x 75"
NCS0067	36" x 24" x 87"

BOX SHELF

SH20



- Box-type shelf with front and rear edges roll-formed and welded
- 20ga steel. Thickness: 1¼"
- Includes four sturdy and compact SH60 clips
- Includes perforations spaced 3" apart c/c for installing dividers

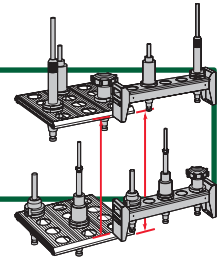


SH60

PRODUCT NO.	W x D
SH20-3024	30" x 24"
SH20-3618	36" x 18"
SH20-3624	36" x 24"

IMPORTANT

Refer to technical guide N50 for recommended layouts based on tool height and intended use.



Multi-level shelving is not recommended if first-level shelving only contains tool racks and two shelves.



NCS2392

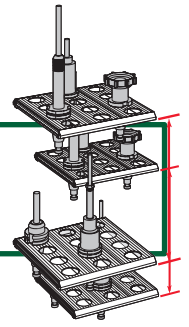


NCS4196

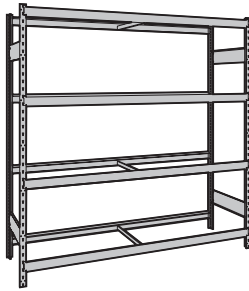
MINI-RACKING COMPONENTS

These models are designed to hold steel shelves and decking for CNC tools. They include one tie bar per "long-span" shelf. 48"W models and under have medium-duty beams and tie bars. 60"W and 72"W models have heavy-duty beams and tie bars.

IMPORTANT
Refer to technical guide N50 for recommended layouts based on tool height and intended use.

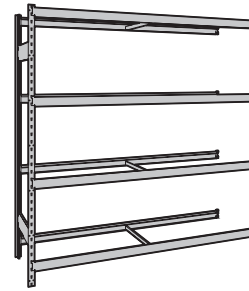


STARTER UNIT



D	H	NO. OF SHELVES	WIDTH		
			48"	60"	72"
18"	75"	4	NCS6070	NCS6072	NCS6074
18"	75"	5	NCS6080	NCS6082	NCS6084
24"	75"	4	NCS6071	NCS6073	NCS6075
24"	75"	5	NCS6081	NCS6083	NCS6085
Load Capacity per Shelf			1,000lb.	1925lb.	1600lb.

ADD-ON UNIT

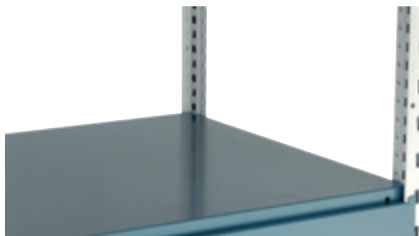


D	H	NO. OF SHELVES	WIDTH		
			48"	60"	72"
18"	75"	4	NCS6092	NCS6076	NCS6094
18"	75"	5	NCS6086	NCS6088	NCS6090
24"	75"	4	NCS6093	NCS6077	NCS6095
24"	75"	5	NCS6087	NCS6089	NCS6091
Load Capacity per Shelf			1,000lb.	1925lb.	1600lb.

NOTE: For PVC decking load capacity, see page 264.

STEEL DECKING

SR40



- Steel decking provides extra shelf rigidity
- SR40 decking can be combined with CNC tool decking on the same level

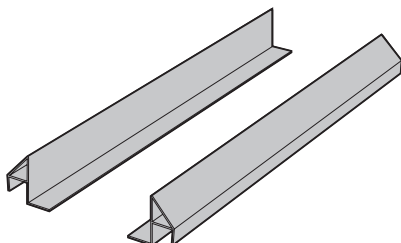
BEAM WIDTH	UPRIGHT ASSEMBLY DEPTHS		QTY. REQUIRED	PRODUCT NO.
	18"	24"		
48	18"	2	2	SR40-2418
	24"	2	2	SR40-2424
60	18"	2	+ 1	SR40-1818
	24"	2	+ 1	SR40-2418
72	18"	3	3	SR40-1824
	24"	3	3	SR40-2418



To order for your specific unit dimensions, order the appropriate number of shelves and the product number(s) specified in the chart for each level of shelving.

LABEL HOLDER

NC32



- Useful for identifying your tools
- Intended for decking units with NC30, NC31 or SR40 decks (included with NC33 and NC34 decking units)
- Compatible with SR40 decking
- Creates a neat appearance

PRODUCT NO.	W x H
NC32-4801	48" x 1"
NC32-6001	60" x 1"
NC32-7201	72" x 1"





NCS6024

PVC deck sections for Mini-Racking must be ordered separately from preconfigured models. The following table specifies the product number corresponding to your tool type.

Made of resistant PVC, the extruded part of the deck section protects tools against impacts, corrosion and metal shards.

The number of tools a PVC deck can hold varies according to tool diameter and the extruded surface length. The number of holes specified in the table indicates the number of perforations per extruded surface.

- Deck section with blank (NC30) or perforated (NC31) surfaces available
- 6"W sections
- Load capacity for an 18"D PVC deck Section: 75lb.
- Load capacity for a 24"D PVC deck Section: 100lb.
- PVC deck sections can be combined with SR40 steel decking on the same level
- 6"W deck Section do not include label holders



NC30



NC31

6"W DECK SECTIONS

TOOL TYPE	TOOL CODE	18"D PVC DECK SECTION		24"D PVC DECK SECTION	
		PRODUCT NO.	NO. OF HOLES	PRODUCT NO.	NO. OF HOLES
Blank rack	00	NC30-1800	—	NC30-2400	—
Taper 30	01	NC31-1801	8	NC31-2401	10
Taper 40	03	NC31-1803	7	NC31-2403	9
Taper 45	04	NC31-1804	4	NC31-2404	5
Taper 50	05	NC31-1805	4	NC31-2405	5
¾" Straight	10	NC31-1810	14	NC31-2410	18
1" Straight	11	NC31-1811	14	NC31-2411	18
1¼" Straight	13	NC31-1813	14	NC31-2413	18
1½" Straight	15	NC31-1815	5	NC31-2415	7
1¾" Straight	16	NC31-1816	5	NC31-2416	7
2" Straight	18	NC31-1818	4	NC31-2418	5
2¼" Straight	19	NC31-1819	4	NC31-2419	5
2½" Straight	21	NC31-1821	4	NC31-2421	5
C3 Sandvik Capto	30	NC31-1830	18	NC31-2430	24
C4 Sandvik Capto	31	NC31-1831	18	NC31-2431	24
C5 Sandvik Capto	32	NC31-1832	7	NC31-2432	9
C6 Sandvik Capto	33	NC31-1833	7	NC31-2433	9
C8 Sandvik Capto	34	NC31-1834	4	NC31-2434	5
HSK 25 (A-C-E)	40	NC31-1840	18	NC31-2440	24
HSK 32 (A-C-E)	41	NC31-1841	18	NC31-2441	24
HSK 40 (A-C-E)	42	NC31-1842	18	NC31-2442	24
HSK 50 (A-C-E)	43	NC31-1843	8	NC31-2443	10
HSK 63 (A-C-E)	44	NC31-1844	5	NC31-2444	7
HSK 80 (A-C-E)	45	NC31-1845	4	NC31-2445	5
HSK 100 (A-C-E)	46	NC31-1846	3	NC31-2446	4
32 KM	50	NC31-1850	18	NC31-2450	24
40 KM	51	NC31-1851	18	NC31-2451	24
50 KM	52	NC31-1852	8	NC31-2452	10
63 KM	53	NC31-1853	5	NC31-2453	7
80 KM	54	NC31-1854	4	NC31-2454	5
VDI 30 mm	60	NC31-1860	7	NC31-2460	9
VDI 40 mm	61	NC31-1861	4	NC31-2461	5
VDI 50 mm	62	NC31-1862	3	NC31-2462	4

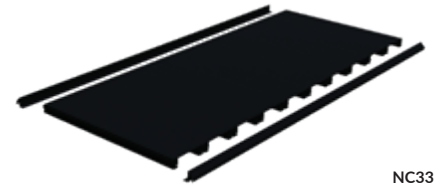
PVC DECKING FOR CNC TOOLS

NC33 / NC34

PVC decking for Mini-Racking must be ordered separately from preconfigured models. Made of resistant PVC, the extruded part of the decking protects tools against impacts, corrosion and metal shards.

To find out the number of tools you can store in perforated decking, multiply the number of perforated deck sections in your decking by the number of holes in an NC31 deck section, [see page 264](#).

- Decking with perforated (NC33) or blank (NC34) surfaces available
- Models for 48"W, 60"W and 72"W Mini-Racking levels available. Perforated model numbers must be completed with the tool code
- Load capacity for an 18"D PVC deck section: 75lb.
- Load capacity for a 24"D PVC deck section: 100lb.
- PVC decking can be combined with SR40 steel decking on the same level
- The decking includes an NC32 label holder
- To order NC34 decking, complete the product number with the tool code, [see page 264](#), e.g., NC34-602405 for 60"W×24"D decking for Taper 50 tools



NC33



NC34

DECKING COMPOSED OF INDIVIDUAL 6"W DECK SECTIONS

BEAM WIDTH	DECK SECTION DEPTH	BLANK SURFACE (NC30 DECK SECTION)	PERFORATED SURFACE (NC31 SDECK SECTION)	NO. OF DECK SECTIONS
48"	18"	NC33-481800	NC34-4818_ _	8
	24"	NC33-482400	NC34-4824_ _	
60"	18"	NC33-601800	NC34-6018_ _	10
	24"	NC33-602400	NC34-6024_ _	
72"	18"	NC33-721800	NC34-7218_ _	12
	24"	NC33-722400	NC34-7224_ _	